

ECS11

ISOCRATIC PREPARATIVE SYSTEM

High effective preparative system containing **UV DAD detector, preparative pump and box for bottles**. Detector allows measuring at four wavelengths in the same time or an informative scan.

Communication is through **RS232** or **Ethernet(LAN)**. Additional PC A/D converter card is not required for this system.



System contains manual injector and **ECOMAC** software which include drivers for all ECOM units.

MAIN PARTS

TOY14DAD 400 DETECTOR

is an UV diode array detector, which allows measuring absorbance of **four wavelengths in range of 200 – 400 nm simultaneously in one cell** just as visualization of whole spectra. It is possible to use the detector in **flash and preparative** applications. Standardly is assembled preparative cell PLCC 15 but other cells are available.

ECP2100 PREPARATIVE PUMP

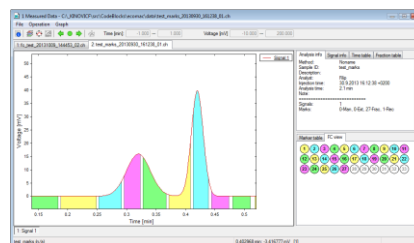
This isocratic pump works with flow rate range **0.1-100 ml/min** and pressure up to **30 MPa**. Unit software includes new learning algorithm for pulsation suppression and many testing and diagnostic functions.

ECB2006 BOX FOR MOBILE PHASE BOTTLES

Box is suited for secure mobile phase bottles installation onto isocratic systems

ECOMAC CHROMATOGRAPHY SOFTWARE

This system is fully controlled by ECOMAC software, which is also a part of delivery. It allows all units controlling, gradient creating and fraction collecting. (Fraction collector can be supplied as option)



SYSTEM CONTAINS

Pcs	Description	P/N
1	TOY14DAD 400 Four Channel Detector	TOY1412
1	ECB2006 Box for MOBILE Phase Bottles	ABC0000X
1	ECP2100 Preparative Pump	ACD0000X
1	ECOMAC software	AF000000
1	Anal. injection valve with 20ul sample loop	AVV02006
1	Sample loop SS 1ml 1/16"	AVVCSL1K
1	Accessories for prep. system series 2000	ASP00180

Note: System can be equipped with detectors **with different wavelengths range** and pumps with **different flow rate** from ECOM production.